

The Meanings of Traffic Control Devices

September 29, 2015

Presenters



**Tamara Redmon – FHWA's
Office of Safety**



**Bruce Friedman – FHWA's
Office of Operations –
MUTCD Team**

Objective of the Webinar

- **To introduce new pedestrian, bicycle and railroad grade crossing related infrastructure applications and technologies that communities are constructing across the nation.**

Objective of the Webinar

- **A discussion will be led regarding what tools and resources are needed to assist in successfully passing this information onto the driver education community.**

Outline of the Presentation

This presentation will cover:

- **Pedestrian-related traffic control devices**
- **Bicycle-related traffic control devices**
- **Grade crossing traffic control devices**
- **Other types of traffic control devices**

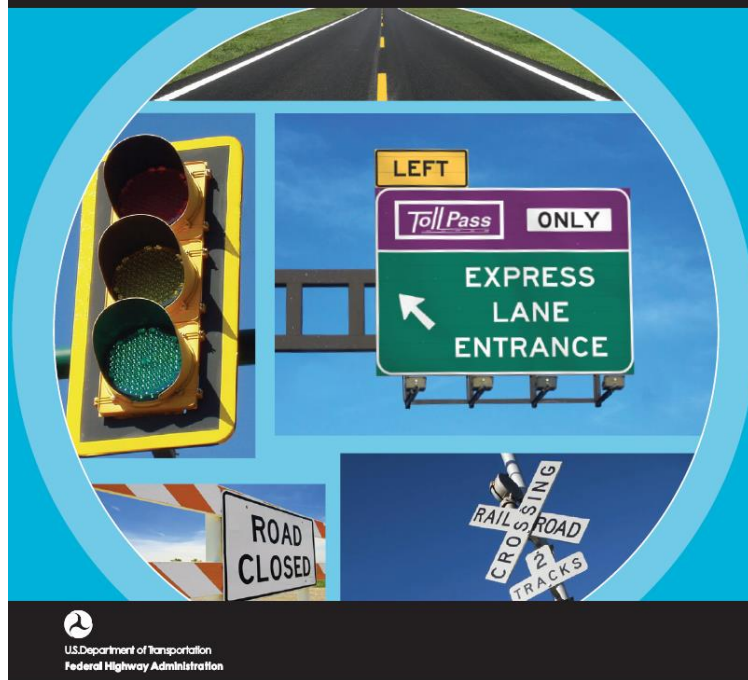
The MUTCD

Manual on Uniform Traffic Control Devices

for Streets and Highways

2009 Edition

Including Revision 1 dated May 2012
and Revision 2 dated May 2012

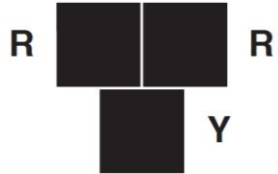


<http://mutcd.fhwa.dot.gov>

Pedestrian-Related Traffic Control Devices



Pedestrian Hybrid Beacons



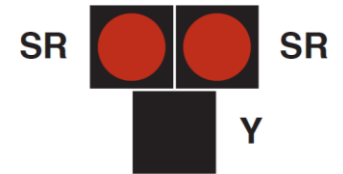
1. Dark Until Activated



2. Flashing Yellow Upon Activation



3. Steady Yellow



4. Steady Red During Pedestrian Walk Interval



5. Alternating Flashing Red During Pedestrian Change Interval



6. Dark Again Until Activated

Rectangular Rapid Flashing Beacons



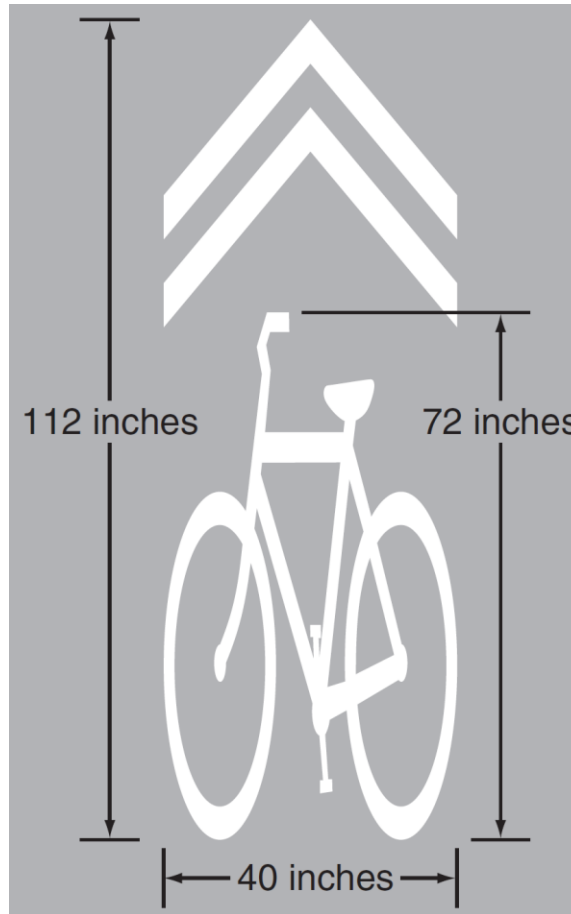
In-Roadway Warning Lights



Bicycle-Related Traffic Control Devices



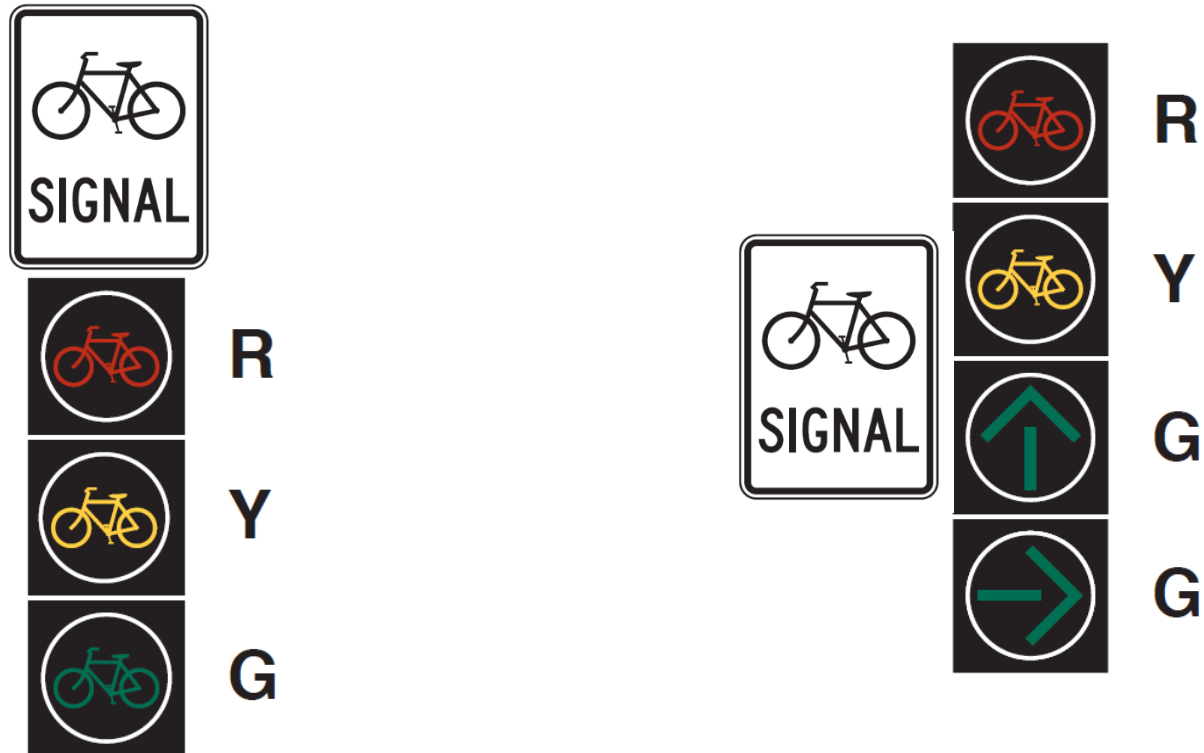
Shared-Lane Markings



Bikes May Use Full Lane Signs



Bicycle Signal Faces



Green Bike Lanes



Bike Boxes



Two-Stage Turn Boxes



Right-Hook Crashes



Dooring



Grade Crossing Traffic Control Devices



Emergency Notification System Signs

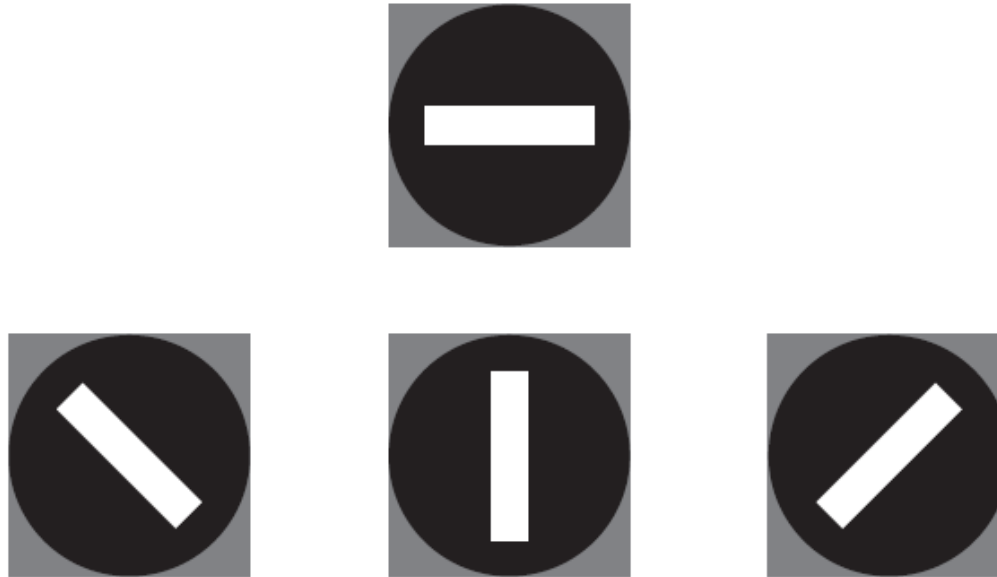


Crossbuck Assemblies

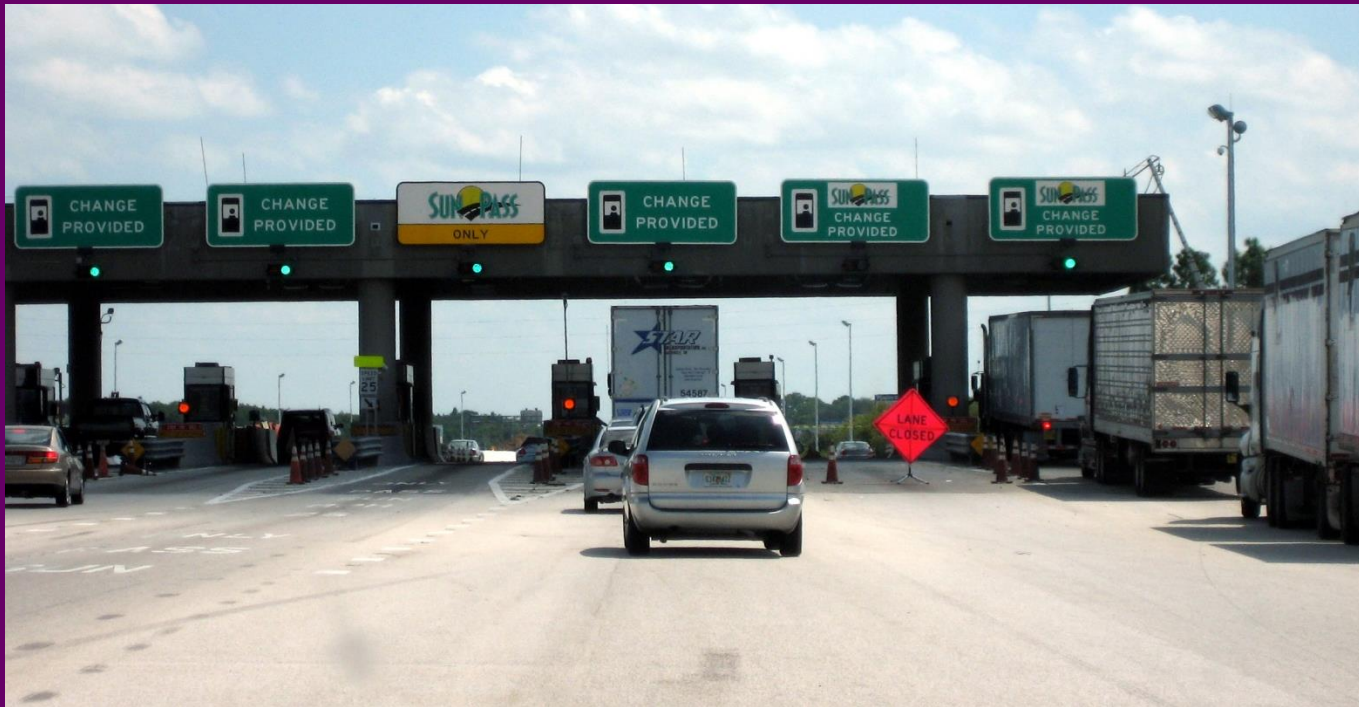


Light Rail Transit Signals

Also used for bus rapid transit signals



Other Types of Traffic Control Devices



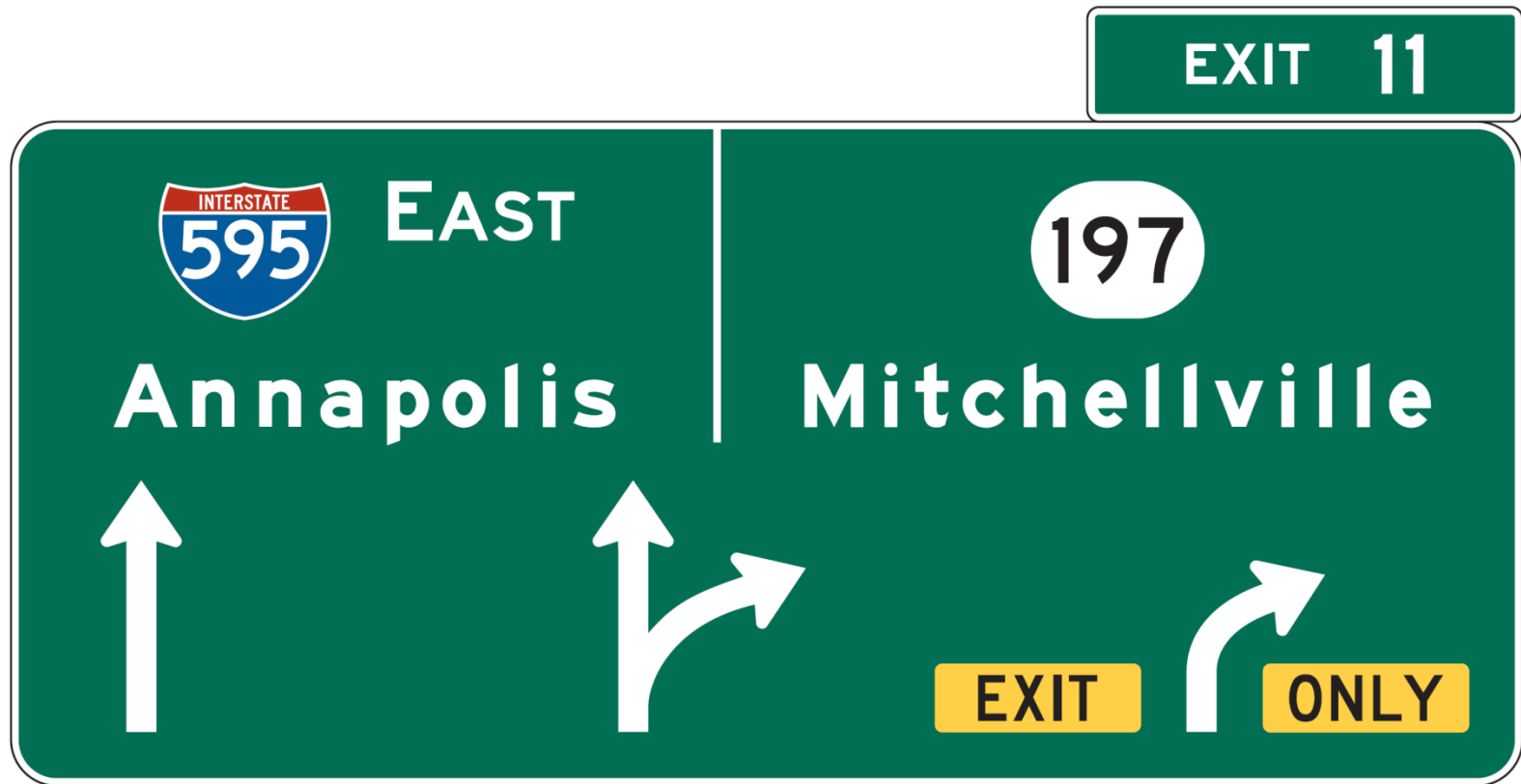
Overhead Arrow-per-Lane Guide Signs

Older style diagrammatic sign:



Overhead Arrow-per-Lane Guide Signs

Newer style overhead arrow-per-lane sign:



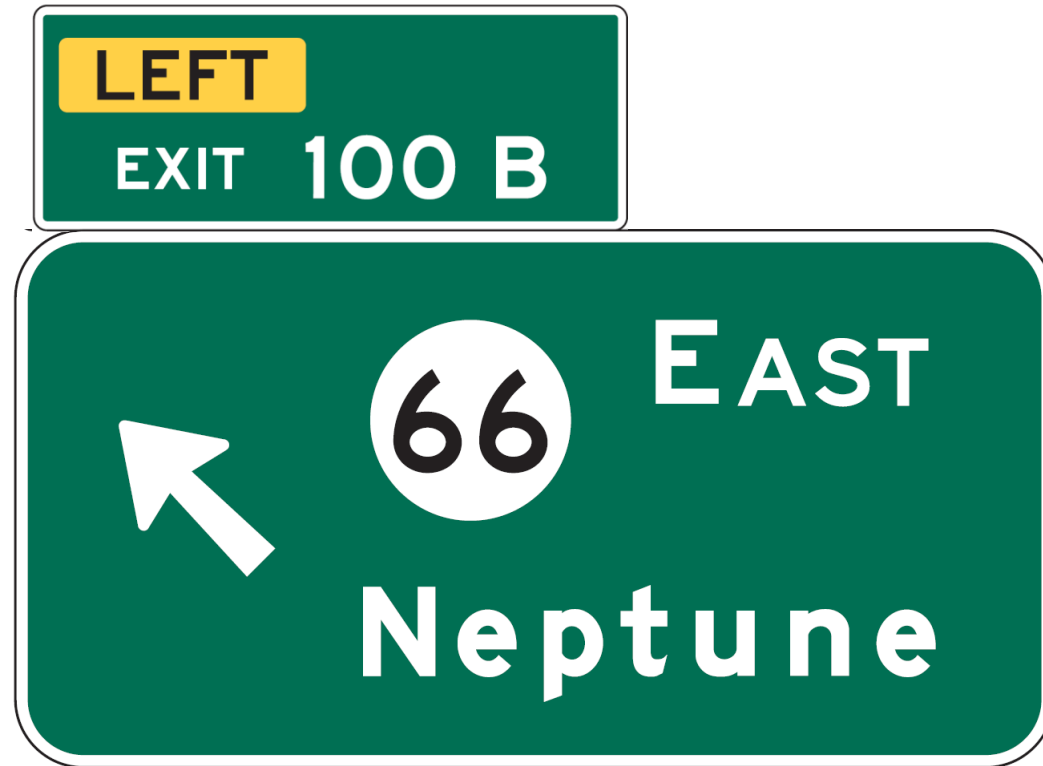
Left Exit Panels

Older style left exit panel:

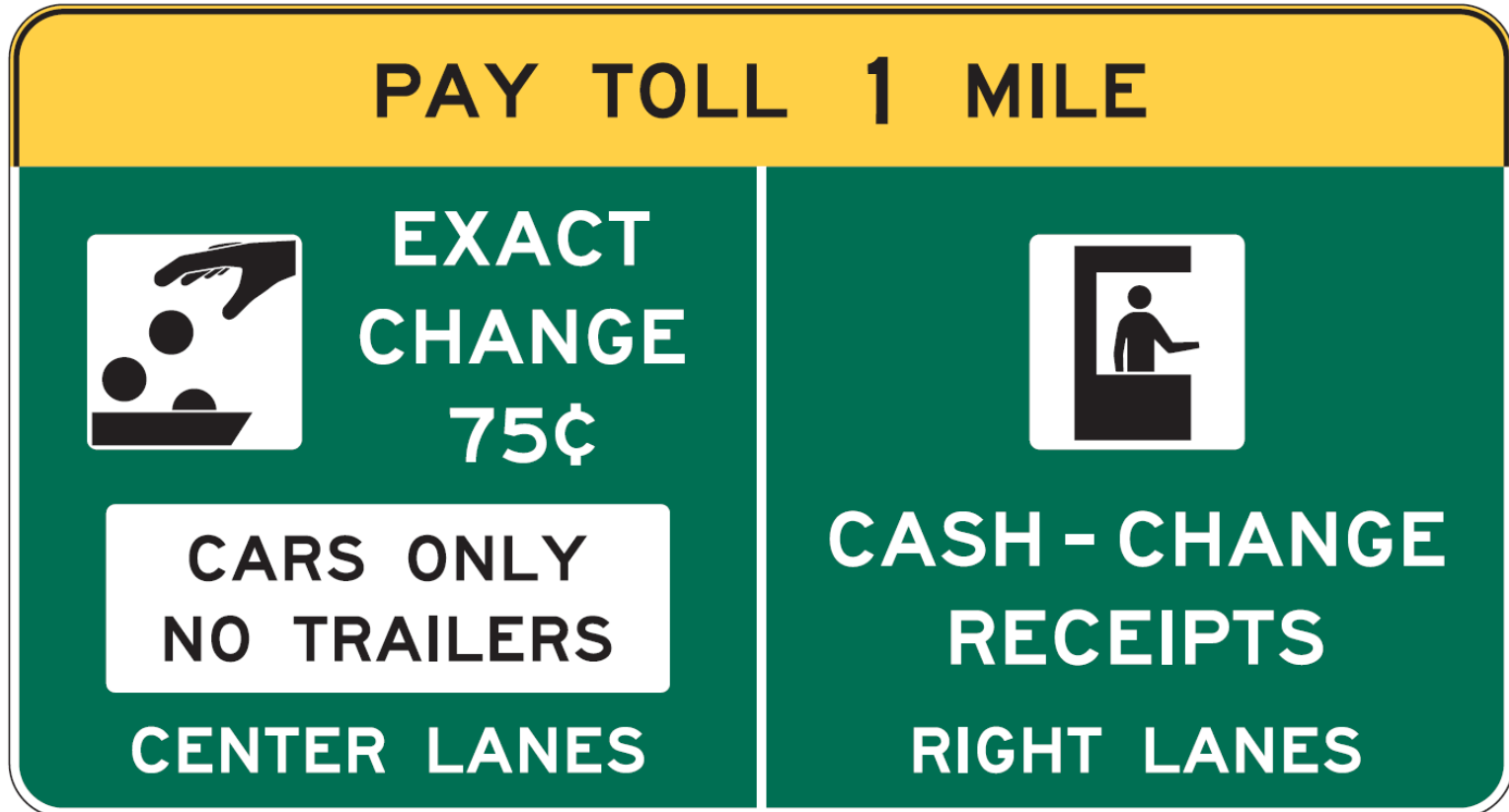


Left Exit Panels

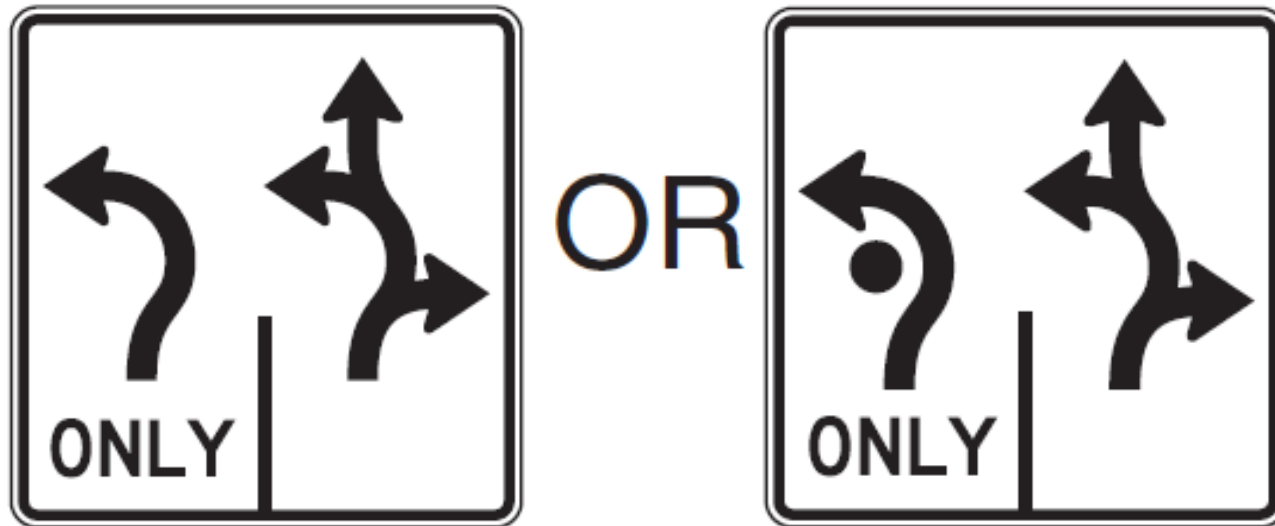
Newer style left exit panel:



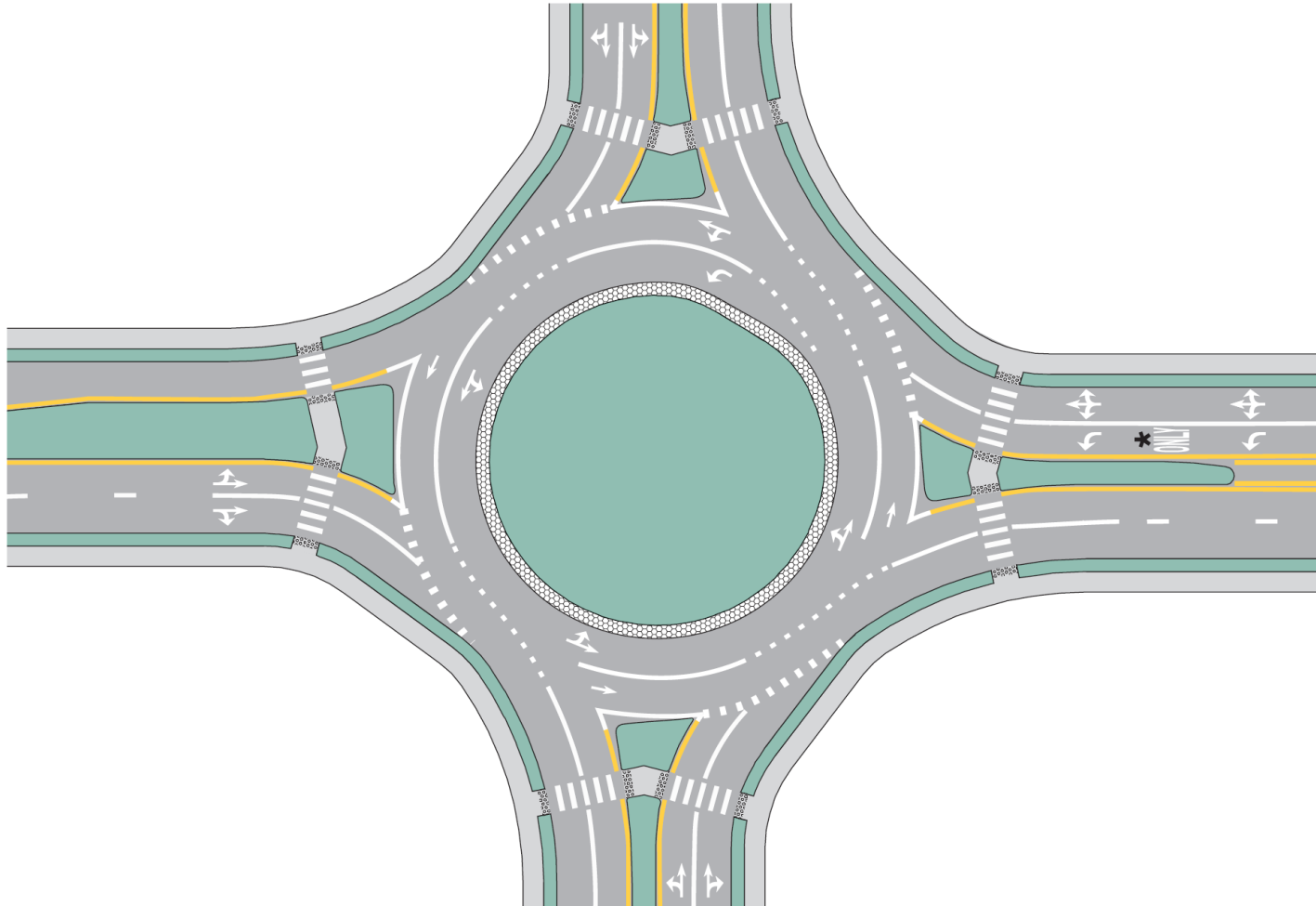
New Symbols for Toll Plazas



Fish-Hook Arrows at Roundabouts

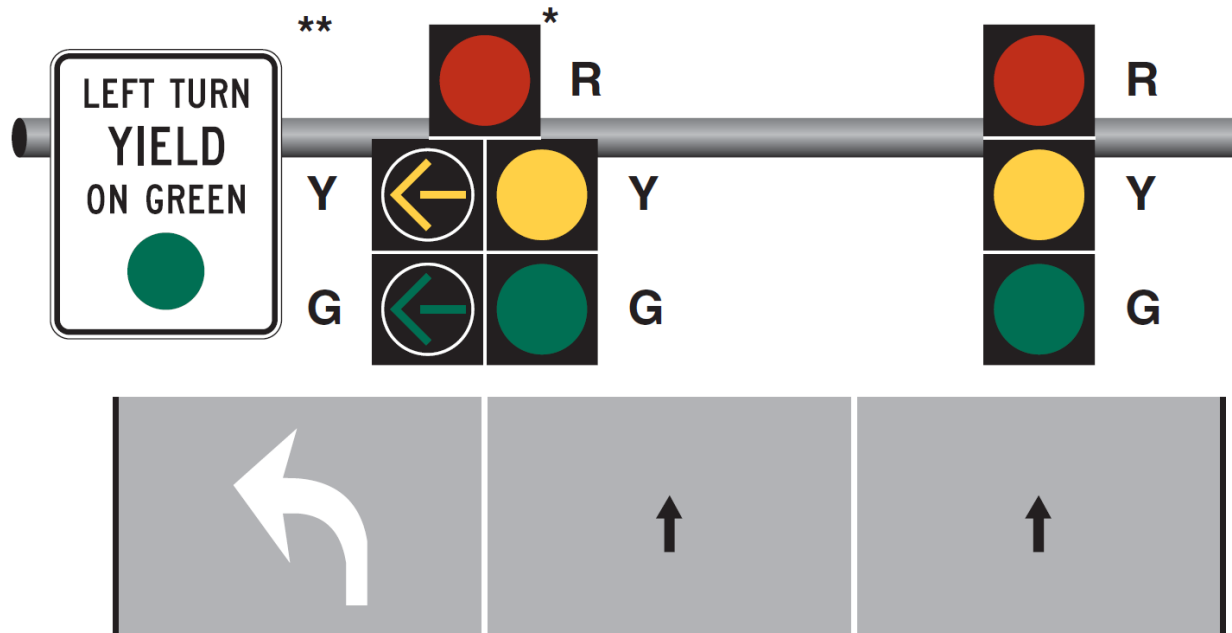


Multiple-Lane Roundabouts



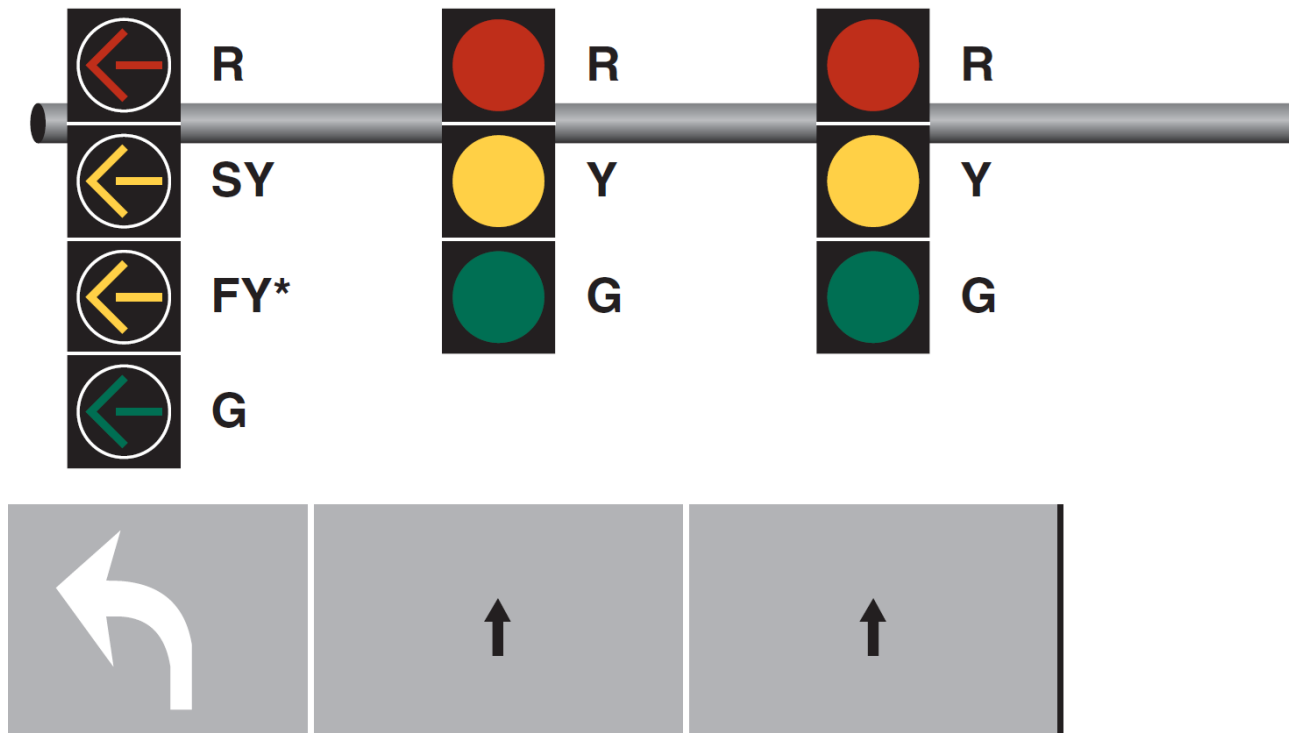
Flashing Yellow Arrows

Traditional signal face designs for protected/permissive left turns:



Flashing Yellow Arrows

Newer signal face designs for protected/permissive left turns:

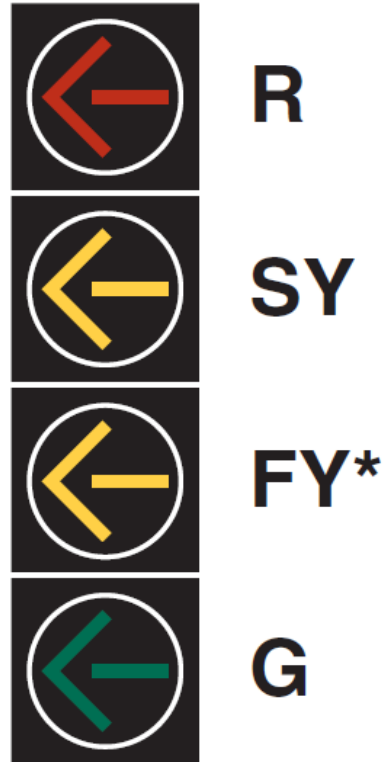


Flashing Yellow Arrows

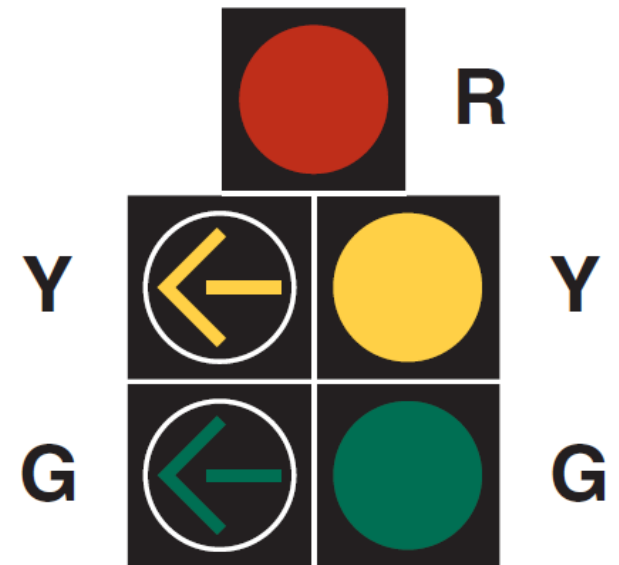
Protected only



Both

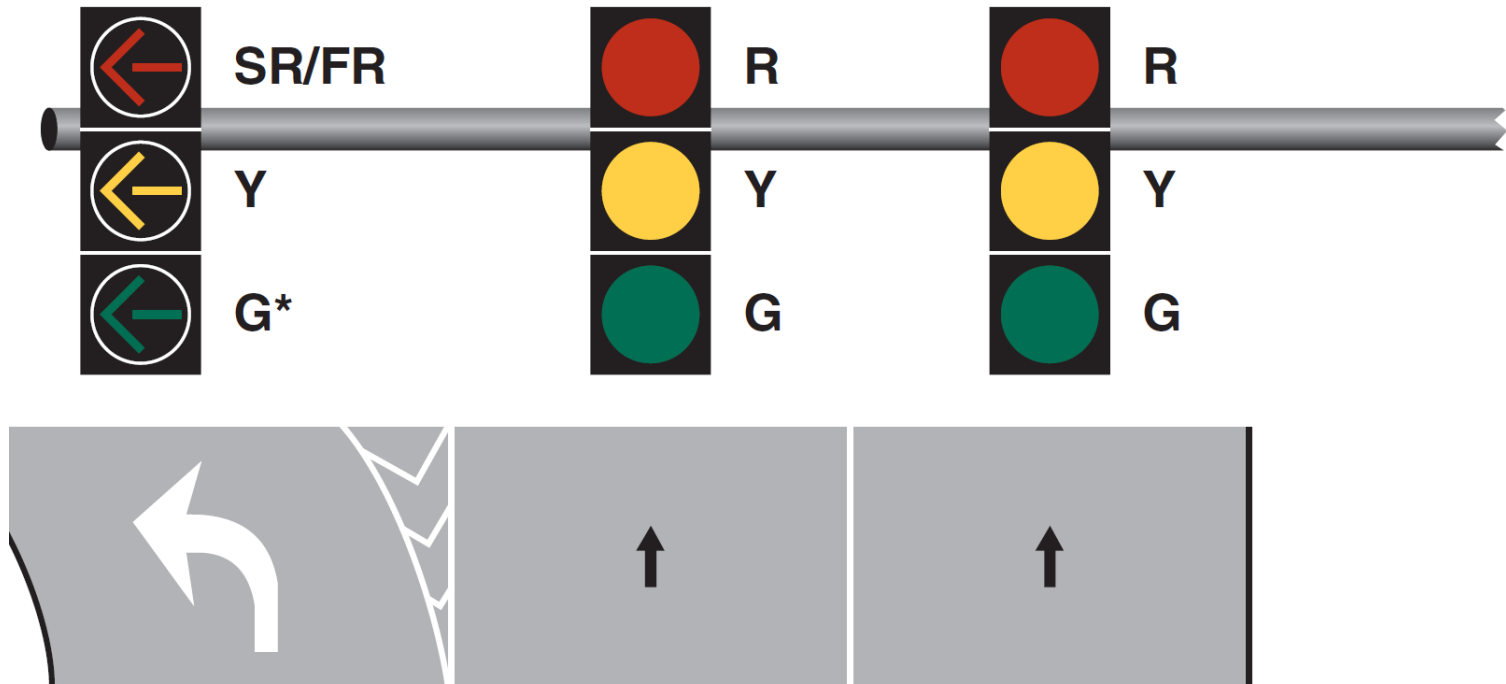


Protected/permissive



Flashing Red Arrows

Each driver is required to come to a full stop before entering the intersection



U-Turn Arrows



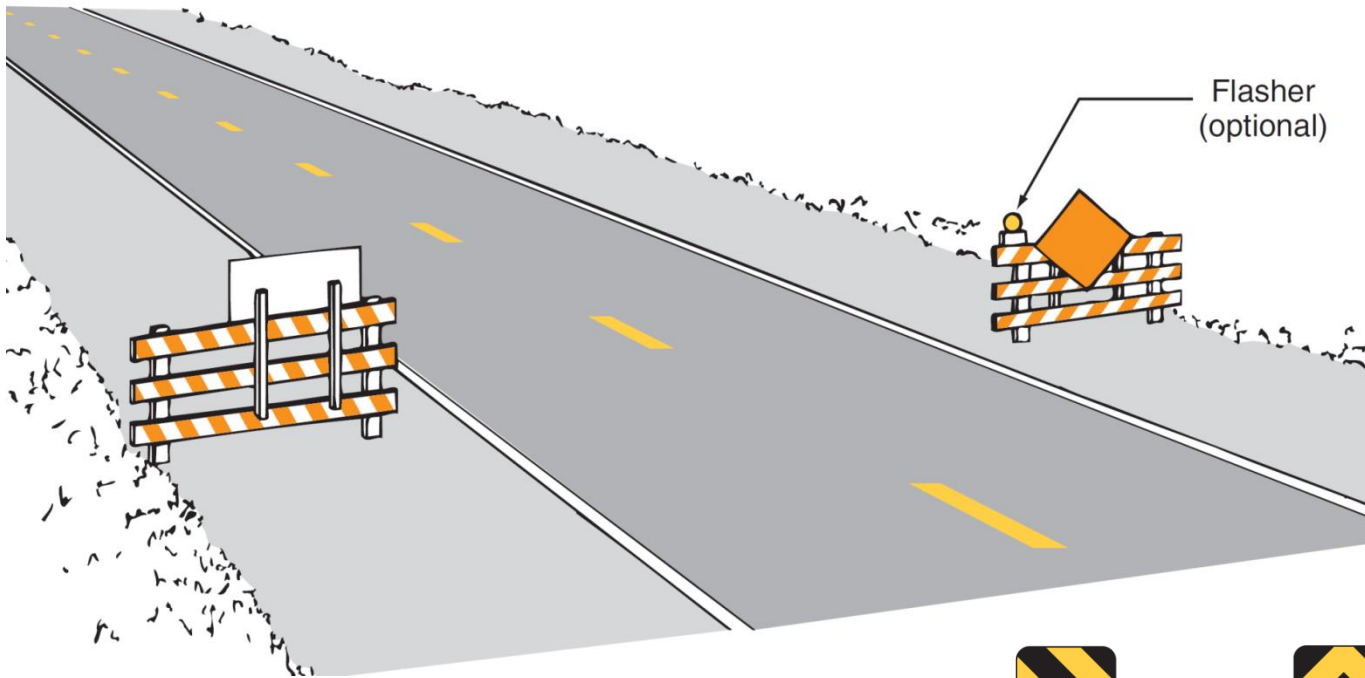
R

Y

G



Stripe Direction on Barricades and Object Markers



OM3-L

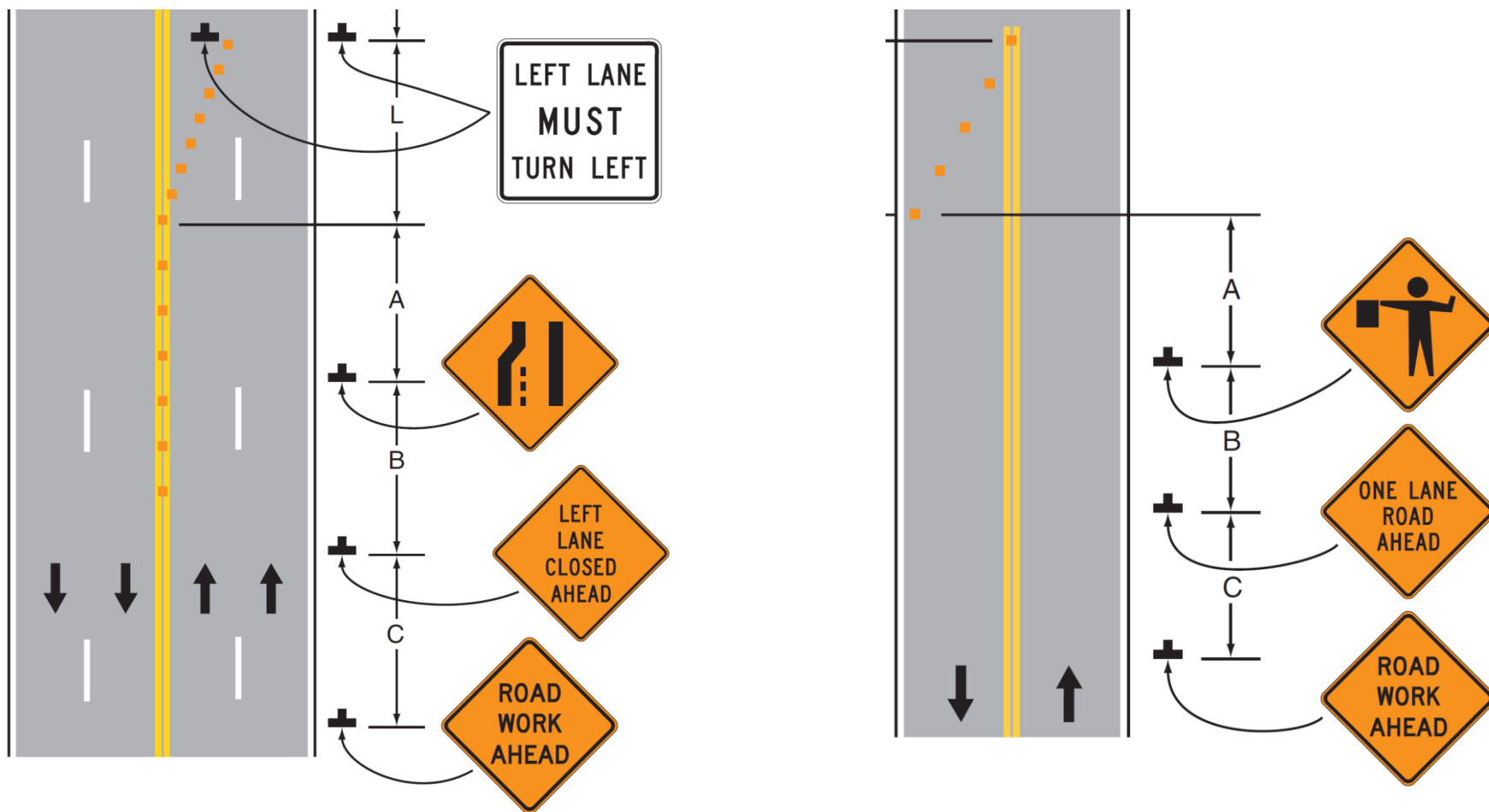


OM3-C

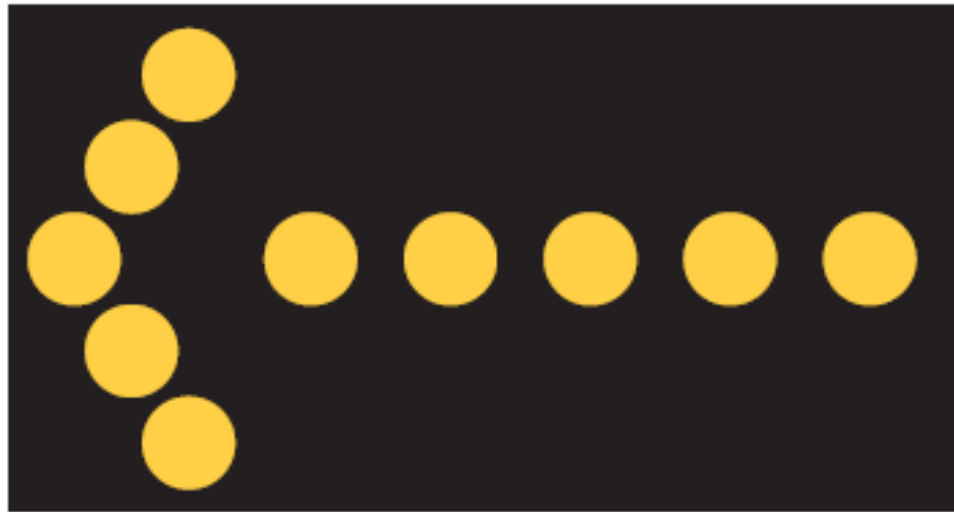


OM3-R

Sign Series when Approaching a TTC Zone



Arrow Board Means a Lane is Closed



Arrow Board Means Use Caution



or



or

Flashing Caution

Flashing Caution



Alternating Diamond Caution

Questions?