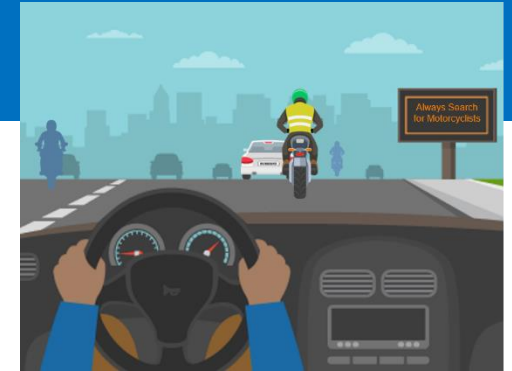


Driver Awareness Around Motorcyclists

Motorcyclists are people with lives, loved ones, and futures!



15 motorcyclists die in crashes every day

Source: NHTSA Data Visualization Tool for Motorcycles

What can you do?

- › Expect to see motorcyclists
- › Leave space when passing motorcyclists
- › Stay in your lane, do not share a lane
- › Keep a greater following distance
- › Watch for turning motorcyclists
- › Thoroughly search for motorcyclists when turning, changing lanes and passing



Smaller in size - more difficult to see



Have very little protection



More likely to get seriously injured in a crash



May be more unstable because they are generally operating on two wheels

You are responsible!

- ✓ Protect yourself, your passengers and all the people you encounter on or near the roadway
- ✓ Obey traffic laws, signs, signals, and roadway markings
- ✓ Use your turn signals
- ✓ Yield "right-of-way" as appropriate
- ✓ Be prepared to make adjustments to avoid collisions or crashes